

ELSWORTH TIMES

THE COMMUNITY NEWSLETTER FOR ELSWORTH

OCTOBER 2022

400 COPIES DISTRIBUTED EVERY TWO MONTHS

ISSUE 22 - 05

Elsworth Show Success Again

Yes, the Tug-of-War cup has returned to Elsworth after many years (you will find it proudly displayed in the shop). Not only did the men win 2-0 but the women won for the second year in a row 2-0. This was the finale to another excellent show, bringing together people from four villages to enjoy catching up in the glorious, and unexpected, sunshine.

There was a fabulous display of entries, so thank you for entering. It makes for great competition and fun.

This report is full of more thank-yous to:

Mousumi Bakshi for opening the show and for getting into the spirit of the day for the prize giving.

The committee, their family and friends for making the event happen.



The WI for their irresistible cakes and thirst quenching tea.

Richard and the team for the marquee

Stall holders for adding to the entertainment and providing refreshments

The Sports club for the trickiest game out

The Pre-school and School for children's (and adult's) games

James and the shop for ice creams and more!

The judges

But mostly the residents of 'Elsworth and District' for coming along on the day.



USEFUL NUMBERS

Elsworth Times Editor

Sue Taylor – set.taylor@btinternet.com

Elsworth Times Adverts

janetpendrill@gmail.com

Police Community Support Officer

Non Emergency - 101

Emergency - 999

Community Fire Safety Officer

01223 376217 or Emergency - 999

South Cambridgeshire District Council

08450 450500 or 01954 713000

Parish Clerk

Liz Sim - 01954 267664

clerk@elsworthvillage.com

Parish Council Web site address

<https://elsworth-pc.org.uk>

Doctors' Surgery

Papworth - 01480 830888

Bourn - 01954 719313

Appointments 01954 719469

Parish Church Contacts

Chris Westgarth - Team Administrator

01480 839933

The Rev Nigel di Castiglione

01954 267241

Elsworth Primary School

01954 267272

Elsworth Show

Sonia Hegan - 01954 267743

Elsworth Sports Club & Pavilion

Secretary - Chris Woodbury

secretary.esc@outlook.com

Bookings for the pavilion Kim Pleszko

bookings.esc@outlook.com

Swavesey Village College

01954 230366

Elsworth Shop

01954 267951

www.elsworth-shop.co.uk

Tree Warden

Paul Harding – 01954 267218

Fardell's Lane Nature Reserve

Louise Hanzl - 07785 614303

Elsworth Walking Group

Contact Tom or Lyn

01954 267166

Tom&LynHogan@pathwaysystems.co.uk

Her Majesty Queen Elizabeth II

21 April 1926 – 8 September 2022

I am sure residents will share with me great sadness at the news of the passing of Her Majesty Queen Elizabeth II. During our lifetimes few of us will have a remembrance of any other person occupying the throne and can truly say that we have been living in an Elizabethan Age.

It was only some few months ago that we were celebrating her Platinum Jubilee, dedicating the refurbished play area and planting commemoration trees to mark the occasion. Queen Elizabeth II has been such a constant in all our lives that it will take a little time to get used to talking about having a king and, in due course, getting used to seeing a different portrait on our stamps, banknotes and coins.



[Justifiably, many fulsome tributes have been paid already to the Queen. The Oxford English Dictionary defines a national treasure as “a public figure regarded as being emblematic of a nation's cultural heritage or identity”, while the Cambridge Dictionary defines it as “someone or something of which a particular country is very proud”. By any of these measures, Her Majesty truly was a national treasure.]

Our deepest condolences go to the Royal Family and our best wishes to King Charles III as he takes up the role of head of state.

Peter Deer. Chairman of the Parish Council

Following the death of Her Majesty Queen Elizabeth II, in accordance with National Protocols, the Elsworth Holy Trinity Church Tenor bell was tolled for one hour at noon on 9th September, along with bells in many other churches across the country.

IMPORTANT DATES

Mobile Library – The Poacher, Second Thurs of the month 2.35pm - 2.55pm

Post Office services from the pavilion: Tues 2-4, Thurs 12-2pm

BIN COLLECTION DATES

Bin Dates	Black Bin	Blue Bin	Green Bin
Thu 6 Oct 2022	✓		
Thu 13 Oct 2022		✓	✓
Thu 20 Oct 2022	✓		
Thu 27 Oct 2022		✓	✓
Thu 3 Nov 2022	✓		
Thu 10 Nov 2022		✓	✓
Thu 17 Nov 2022	✓		
Thu 24 Nov 2022		✓	✓
Thu 1 Dec 2022	✓		

Elsworth Show Results

Results of the 64th Elsworth and District Show 2022

What a show, so many entries this year of a very high quality. It was amazing to see such a wide range of produce in such a hot, dry year.

The cookery judges were impressed by the entries particularly the fancy breads where they were impressed by the varied range of flavours and shapes.

They did offer some tips to budding entrants next year. Scones should be a traditional shape (round), with a light and fluffy texture and be able to be split easily. To achieve this the dough should be quite moist, treat the mixture very gently and pat into shape, about an inch thick (2.5cm) before cutting out.

Sausage rolls should be made with homemade flaky or rough puff pastry and a good quality sausage in the middle. Make sure there is a good balance between pastry and filling.

In the preserves section make sure you use clean jars, if a jar has ever contained pickles or chutneys then it should never be used for jam. If the jar has a lid then you don't need a waxed disc. Make sure that any branded lids are covered – your choice. If you are making a relish then it needs to go in the chutney class, we will change the class name to reflect this.

Below is a list of all the winners in this years show.

Elsworth, Knapwell and Conington Women's institute challenge cup – most points in cookery, preserves and drinks

- 1 Christophe Faucherand
- 2 Geoff & Sue Clark
- 3 Andrew Pope



Boxworth WI Challenge – most points in needlework and handicrafts

- 1 Alenka Gregory
- =2 Lynda Minshull
- =2 Helen Baker



Girls cup - most points in children's section M

- 1 Alais Faucherand
- 2 Abi Crisp
- 3 Millie Stevenson



Boys Cup - most points in children's section M

- 1 Andrew Bicknell
- 2 Ethan Seifert
- 3 Edward Logan



J Mitham cup for children – most points in children's handicrafts

- 1 Millie Stevenson
- =2 Alais Faucherand
- =2 Abi Crisp



Elsworth British Legion – most points in the vegetable section

- 1 Peter Gladders
- 2 Ian Hardy
- 3 Papworth family



Elsworth and District show – most points in the flowers and plants section

- 1 Peter Gladders
- 2 Papworth family
- 3 Louise Hanzl



Elsworth, Knapwell and Conington Women's institute vase – most points in floral art

- 1 Sarah Cook
- 2 Katrina Seifert
- 3 Miranda Misseldine



Arnold Hodson – most points in the fruit section

- 1 Papworth family
- 2 Bridget Gaskill



Elizabeth Heath memorial cup –most points in the preserves section

- =1 Pete Gladders
- =1 Miranda Misseldine
- 3 Jane Green



Elsworth and district show challenge cup – most points in the show

- 1 Peter Gladders
- 2 Geoff & Sue Clark
- 3 Papworth family



Winner of the Pharminox Isolation perpetual challenge trophy for the best original painting.

Maggie Ward



Join us at the Pavilion!

It was amazing to see the village come together as a community last weekend to celebrate the summer at the 64th Elsworth and District Show. The whole committee at Elsworth Sports Club are keen to see the Pavilion being used as a central hub of village life. Since taking over in May, we have been working tirelessly to improve the facilities and get the word out that we are open for bookings!

The pavilion can be rented for the low price of £15p/h, with further discounts available to long term and multiple bookings. We are also running a new club scheme, meaning any new club starting up in the village can use the Pavilion for FREE to help them gauge interest and build a solid foundation.

We would love to welcome you for a birthday party, family celebration, important meeting or any other gathering you can think of! To discuss your needs, ask a question or book the Pavilion, please contact our Bookings Manager Kim via bookings.esc@outlook.com or by phone on 07770 807850.

If you have any suggestions about how we can increase the appeal of the Pavilion and help raise awareness that we are keen to welcome people, please contact our secretary Chris via secretary.esc@outlook.com or call on 07922 271356.

THE MANOR HOUSE



The Manor House on Smith Street, right next to the playing field, is one of the first notable buildings one might see when entering Elsworth.

It is a Grade II listed house, of whitewashed red brick, two storeys high with attics and tiled roofs, built on a

U-shaped plan with wings. It was most likely built for Samuel Desborough (or Disbrowe), Keeper of the Great Seal of Scotland during the Civil War (no clue as to what he was doing here during the English Civil War). He bought the property from the Wendy family in 1656 (Dr Thomas Wendy, a physician, was given the property for services rendered to the Crown). There is a rumour that the daughter of Oliver Cromwell, (who is connected to this general area) and her family lived in the house at one time.

During the 18th century, the house was refurbished and remodelled. Around 1800, the entrance was moved from the south to the west, the building was heightened and widened on the north, and a first-floor saloon and corridors were created. Possibly at the same time, the west wing was also lengthened. Some fittings were removed prior to 1939, including a mid-17th-century staircase (elements of which are now at the Mill House, Pebmarsh, Essex). The Manor House itself had a bake-house (rebuilt in 1843 according to a newspaper advertisement) and other houses and buildings adjacent to it.

Other buildings and farms were originally part of "The Manor." Dear's Farm, a two-storey framed and thatched house, was partly of the 17th and partly of the 18th century. Child's Farm was a two-storey, plastered building with a hipped slated roof. Meadow Farm had a house and out-buildings. Brockley Farm consisted of a two-storey brick house with a tiled roof. All of these would have had multiple out-buildings, including dwellings, as well.

The Manor House was more recently divided into a number of sizeable individual dwellings.



Elsworth School



Some of this year's Reception Class

It has been wonderful to have the children return to school after the Summer holidays. They have all returned keen and ready to learn. Our new Reception children have settled in well and it has been lovely to see their smiley faces each morning.

Following the sad news of Her Majesty, Queen Elizabeth II's death the school gathered around the Jubilee tree to be still, pray and reflect on The Queen. The children shared their

thoughts about how The Queen had impacted their lives and the type of monarch she was. They shared some lovely and heartfelt comments about The Queen.

On Monday 12th September we had a special Collective Worship to commemorate The Queen's life, her duty of service to our country and The Commonwealth. We said a special prayer for The Queen and our new King, King Charles III.

The focus for our Collective Worship this half term is 'Thankfulness'.

A Prayer !

Father God, we thank you for the life of your servant, our late Queen, Elizabeth. Thank you for the example of dedication, faith and service that she set throughout her life, both as our monarch and as a mother, grandmother and great grandmother.

We pray particularly for all her family at this sad time. Comfort them in their loss, strengthen them in their time of need and fill them with joyful memories of times past.

We pray particularly for Charles as he takes on the role of King. Give him wisdom and humility, and help him serve our country as his mother did.

Comfort us also as a grateful nation. Help us to serve others dutifully, following Queen Elizabeth's example, so that we might learn to live together in love and respect.

We ask this in Jesus' name,
Amen.



ELSWORTH PRE-SCHOOL

All of the team at Elsworth Pre-School are excited to begin the new year and welcome our children and families both old and new! It is a unique time of year where we get to know so many new characters, marvel at how our returning children have grown and hear so many summer holiday tales. There is so much energy, it's simply impossible not to be swept up by the magical atmosphere.

This summer holidays brought with it a make-over for our outside area. We now have a spacious area for the children to explore in with new play equipment that is already being enjoyed. Thank you to Timberworks by Badger for our new tunnel climbing frame. The children have seen it as a new challenge and have been finding different ways to climb over, round and through it with plenty of collaboration and support for their friends.

A huge thank you to our dedicated fundraising committee for organising the Elsworth Pre-School contributions at The Elsworth Show, there was a lot of laughter with the 'Welly Wanging' competition. We are privileged to be part of such an amazingly supportive village.

The Autumn term brings with it opportunities for art and creativity with so many natural resources available as we learn about the seasonal changes. We will be making leaf art complimented by Leaf Man by Lois Ehlert as our inspirational book and we are sure that this will bring with it lots of leaf stomping too! We will be finding blackberries to make blackberry tarts and elderberries for cordial. Look out for some homemade goods coming home soon.

Our nurturing Pre-School has some spaces available still. If you would like a chat about how we can support your child's early years journey or arrange a visit please contact us on 01954 268050 or email at elsworthpreschool@outlook.com we are always happy to help.

Elsworth Disco Ceilidh and Children's Disco

We had 2 fantastic events on 3rd September the night before the Elsworth and District Show. With huge thanks to the show committee for letting us use the marquees.

The kids disco was great fun. It was lovely for the children to catch up before going back to school and dance together. A lot of the children were seeing the new play ground equipment for the first time and were just as excited about that as the music!

The disco ceilidh was also a lot of fun with the brilliant enthusiasm of our caller Miss Barker getting everyone on their feet. Stripping the willow to the YMCA was a first for Elsworth. Money raised will be going to the school and ACCESS Elsworth. Look out for future fundraising events.



HOLY TRINITY CHURCH - ELSWORTH



Help

I like to have a clear idea of the route before setting out on a journey. I may get a sense of the anticipated journey time from my phone AND like to see if the route makes sense; so I look at the road map under the seat in the car also! Of course, neither the phone nor the map can anticipate traffic jams and accidents on the road. My son tells me to chill and has very little sense of geography when making a

journey because he can trust the maps app on his phone! Annoyingly he is right usually, and my cautious instincts proved wrong!

There are many things we can't control. Far more than we often realise or remember. A year ago, none of us thought we would have a new Prime Minister, that war in Ukraine would have broken out, inflation rocketed and fuel bills soaring to eye-watering levels. The weather conditions accelerated the harvest; now (writing in early September) there is a desperate need for rain so that the next crops can be so

The COVID lockdowns could have taught us to be less reliant on our own plans, making us much more flexible and reactive to what the journey of life throws at us. The sense I get is 2020/2021 was for many a time of deep trauma and some are left looking for more certainty rather than feeling better equipped for uncertainty. Whether we are anxiety-ridden or rolling with the punches may be a matter of temperament, how we are wired, the environment we knew earlier in life; which – for some of us – seem yet more things we can't do much about!

Through the good efforts of those who have campaigned hard for a better care and appreciation of the environment, we have become more accustomed to using 'Bags for Life'

Giving thanks for HARVEST 2022

Throughout the past year many people have generously donated foodstuffs and other items though the Foodbank Box in Elsworth Community Shop. This has meant I have delivered goods from Elsworth every month - sometimes twice a month - to a local Foodbank because of your support; the feedback is that this both appreciated, very much needed and demand is growing exponentially at this time.

Please keep your support coming and continue to purchase what you can for the Foodbank through our Community Shop; i

We are holding a Service of Thanksgiving for Harvest in Holy Trinity Church, Elsworth on Sunday 16th October at 6.00pm, which will include the contribution of a Scratch Choir put together for this occasion. All are welcome!

A further way to support this important charitable activity is to give money which will be passed in full to the Foodbank. If this works better for you, there will be envelopes in church for cash donations from Sunday 18th September. These should be brought to the Harvest Service, if possible; alternatively, passed to James Howell (Churchwarden) or me.

Nigel di Castiglione

Team Rector, Papworth Team Ministry

rather than relying on single-use items that litter our streets and demand landfill sites. This may be a good time to ask ourselves if we have a "Faith for Life"?

I find the Bible speaks into these issues (and much more!). We can't expect to be isolated from challenges and dilemmas; bad things keep on happening to good people. It wouldn't be like that if I had my way! But there is good news: we can know the presence and peace of God in the tough times, to uphold us as we go through the many ups and downs. He remains the God of miracles.

Over the next few weeks there will be services and suppers in keeping with the season; to give thanks for God's provision and to celebrate in community for work done. Whether we are full of faith or quaking in our boots, these can be helpful meeting places; that reawaken our recognition of God and our dependency on him. Join us if you can. Look out also for opportunities to give something to help others in great need and who depend on our generosity as a feature of God's bounty to them.

Nigel di Castiglione

Team Rector

ELSWORTH HARVEST SUPPER

Saturday 15th October, 7pm at the Pavilion

£10 per ticket

£5 concessions

(on sale in shop)

Tickets include supper and glass of wine



ELSWORTH JUBILEE CLUB NEWSLETTER

NO 390

SEPTEMBER 2022



**Meetings are held on the first Thursday of the month,
in the Sports Pavilion, Broad End, CB23 4JD at 2pm**

We are deeply saddened at the death of our beloved Monarch, Queen Elizabeth II and thankful for her 70 years of faithful and constant service.

At this historic event in time, we look back in celebration of her life and look forward to the future, as we move into the reign of our new King Charles III

OCTOBER – Thursday 6th

Anthony Taylor

'All About Being a Vet'

NOVEMBER – Thursday 3rd

Emma Saunders & Team

**'Illustrated talk and comprehensive insight into the workings of the
MAGPAS Air Ambulance Service'**

DECEMBER – Thursday 1st

Chaya Robertson

'A Wee Dram – The Story of Single Malt Whiskey'

PLUS, the CHRISTMAS LUNCH

Ride and Stride 2022



Almost simultaneously the act of cycling has the capacity to be both an introspective and joyously sociable activity. The momentous weekend context gave six happy riders the chance to do the riding bit of the Ride and Stride 2022 challenge and help assimilate the changing world we're waking up to, it seems, daily.

We rode in aid of Access Elsworth and the Historic Churches Trust, with specific plans to develop the rear of Holy Trinity Church to make it a hub of friendliness and inclusion within our community. Any support is always welcome via the Just Giving page (<https://www.justgiving.com/crowdfunding/accesselsworth>) or through sponsorship forms (for another couple of weeks) in the Village Shop.

The raw numbers were 64 miles and 31 churches visited... and one other place of worship (The Lion at Ickleton). The greatest pleasure is the sheer number of churches and villages you see and visit which you otherwise never would and particularly remarkable were medieval wall paintings at the redundant church of St John in Duxford and perhaps more impressively at St Mary Magdalene, Ickleton, discovered after a fire in 1979.

The lowest point was a literal soaking to the skin near Flint Cross on the A505 and the highs were homemade flapjack from a parishioner at Duxford and simply bumping into two parishioners heading to Shepreth church with no particular link to the event who opened up the church kitchen and provided soaked cyclists with perhaps the most welcome cup of tea that has ever been drunk. Generous humanity is a great thing to touch.

Ken Rhodes



Greater Cambridge Local Plan – How it impacts Elsworth

A Local Plan is a legal document that the Councils are required to prepare, which sets out the future land use and planning policies for the area over a set time period. This includes:

- the amount of new homes and jobs that should be planned for
- the services and infrastructure that are needed to support this change
- where new development should happen, and where should be protected from development

At the end of 2021 Cambridge City Council and South Cambridgeshire District Council held a full public consultation on the First Proposals for the Plan, which includes those sites that are offered for development.

They published the comments received this year and allowed further sites to be submitted.

The decisions in the plan could have a major impact on the village especially if East West Rail does go ahead and a station is approved north of the A428. You will remember that opinion in the village on the EWR consultation/potential 10k housing development was canvassed via a questionnaire sent out by the Parish Council. On the basis of the responses received the Parish Council has continued to resist the proposals.

If you weren't motivated enough to go through all the responses, here is a flavour of what was said about the future development of sites north of Cambourne.

IN FAVOUR OF DEVELOPING SITES NORTH OF A428

GAMLINGAY PARISH COUNCIL support expansion to the north-in relation to the proposed EW Rail Station. They have always been pushing for the line to go north away from their village and Bridget Smith SCDC Leader is a District Councillor for Gamlingay

The WILDLIFE TRUST (based in Cambourne) doesn't want their Country Park nor the site for the golf course (?) impacted by East West Rail, both of which are south of Cambourne.

CAMBOURNE TOWN COUNCIL have an interesting position. They only want:

- more housing development with a railway station,
- planning permission granted once work commences on the railway station, and
- new homes only to be occupied once the station and rail services are operational.

They object to development locations south, west and south-east of Cambourne. In all these locations they say there would be a major adverse impact on:

- existing road networks through the town,
- high-quality landscapes to the south of the town and
- Cambourne's country park and its value for people and nature.

That would leave then the only option for potential growth that is supported by Cambourne Town Council is to the north of A428, which is where they want the station.

In this location they must therefore conclude that there would be no major adverse impact on the three points above.

Interestingly they are silent on the impact on the local villages of developing Cambourne further. With West

Cambourne and Bourn Airfield built out they say Cambourne will have c10,100 houses. If the station goes ahead north of the A428 with the housing development, then there will likely be potentially another 10,000 houses – so Cambourne could DOUBLE in size.

EAST WEST RAIL supports the proposed allocation of additional housing at Cambourne, which is strange as their staff always say that housing developments are nothing to do with them. They ask if no new houses could be built where they want their rail line to go, please – changing the south route already potentially requires new houses in Bourn Airfield/Caldecote to be knocked down.

SAVILLS submitted a very long response on behalf of Martin Grant Homes Ltd (MGH) for 'North Cambourne', which in fact will be in the parishes of Elsworth & Knapwell. Here are a few points.

They think this is a wonderful idea that will 'consolidate the functions of the existing settlement'. Factually North & South Cambourne would be separated by the 4-lane new A428 and a rail line complete with its train cleaning facility and passing loop for diesel goods trains.

Apparently, they 'understand and respond to local concerns' and want to 'increase and improve networks of habitats for wildlife and green spaces for people'.

They are desperate obviously for the EWR station to be north of the A428 – 'we know from the EWR 2021 consultation that the preferred option for the route and a station to serve Cambourne is on MGH land, to the north of the A428.'

They then contradict EAST WEST RAIL, who said that 'development opportunities' are not a matter for them, by quoting that 'Savills and MGH have actively engaged in the EWR Consultation that took place earlier in 2021'.

They go on to talk about how they have shared plans and details of optioned land and that MGH is fully supportive of the proposed alignment, due to the benefits for Cambourne and the developers. They admit they will accommodate a four-track line, with a passing loop to accommodate freight if needed, and presumably the train washing facility etc.

Unfortunately for Cambourne Town Council they want to get started on building asap if this is agreed 'We suggest that the earlier delivery of this new mixed-use community should not be delayed pending the construction of the railway line and station, but rather that it's delivery should be facilitated sooner, recognising the major benefits the railway and station will bring, in due course, to a settlement that is already well connected, whilst also being capable of high levels of self-containment'.

'The aspirations of existing Cambourne residents are also really important', but they make no reference to Elsworth & Knapwell residents.

Having referenced the wide-open landscape and vista that we enjoy, Savills say that they will be 'retaining an open agricultural landscape, as well as accommodating a new settlement, as well as providing a series of significantly strong woodland to create the framework for development'.

The reader may consider these statements in the context of potentially 10,000 houses, a railway station, and commercial development all in the name of sustainability. Presumably there would be significantly more traffic through Elsworth.

HALLAM LAND MANAGEMENT LIMITED (a strategic land promotion business) are concerned about all the development being by Cambourne and want to share in the opportunity by offering a site at Scotland Farm, Dry Drayton. They believe this will give the council more options on where

it wants to build.

The CAMBRIDGESHIRE DEVELOPMENT FORUM wants lots of development at Cambourne - new homes and a commercial hub based on any new railway station above the A428. They want 'a large-scale offering of homes'.

Who are they? Well members include Savills, Endurance Estates, Taylor Wimpey, Countryside, Hallam Land Management – so vested interests all linked to the sites in question. Seems unfair they get two goes at the consultation – perhaps the village needs to create some additional groups so it can increase its representations!!

Unsurprisingly other commercial developers are also keen that they get involved and are selling the benefits of new transport links. TWO AGENTS are pushing farmland to the northeast of Caxton Gibbet that they believe would be really good for commercial, including logistics units, and residential. Apparently, developing land at Caxton Gibbet makes Cambourne more sustainable.

AGAINST EXPANSION OF CAMBOURNE NORTH OF A428

The PARISH COUNCILS AT CROYDON AND CAXTON both believe that Cambourne is large enough. Another individual comments that Cambourne and Papworth should remain separate communities and that there is no consideration for a development envelope or any constraints over development sprawl into the neighbouring village developments.

BOURN PARISH COUNCIL go further saying that it was the Planning Authority's intention to develop Cambourne into a 'new town by stealth' and that local people are not supportive of Cambourne becoming a 'South Cambridgeshire town for the 21st century'.

In a view supported by our Parish Council they are concerned that the future development of Cambourne makes no mention of mitigating the impact on landscape and the character of older, more established, communities.

DR WILLIAM HARROLD of Cambridge Approaches acknowledges that whilst Cambourne needs better public transport, EWR will cause unnecessary environmental damage and planning blight with associated housing around EWR stations.

The CAMPAIGN TO PROTECT RURAL ENGLAND (CPRE) comes out strongly against stating that 'This is an object lesson in how urban sprawl occurs when there are no insurmountable natural barriers to stop it'. They go on to say that 'It will take up further productive farmland and will lead to a never-ending cycle of demand for additional development' and that it will lead to further development along the A428.

The RSPB CAMBS/BEDS/HERTS AREA have concerns about significant development north of the A428, which might put recreational pressure on SSSIs like Overhall Grove and Elsworth Wood. However, they went on to say that any new development would need adequate green infrastructure provided and will need to be well integrated with the EWR rail station location and vice versa so that the new station is integral with the development of the town.

What next ?

Of course, this might not come about but what will happen is that the councils will be consulting on a Draft version of the Local plan in 2023. That will potentially have implications for the village.

Do please respond when this comes out – every response counts – the more responses they receive, the more views they must reflect and consider.

Written by David Pope in a personal capacity

CLERK'S COLUMN

LIZ SIM PARISH CLERK

Telephone: 01954 267664

e-mail: clerk@elsworthvillage.com

It was with immense sadness that we heard of the death of Queen Elizabeth II on September 8th. For many of our residents the Queen was The Queen as they had never known another reigning monarch. Protocols for arrangements described for the death of the sovereign code named "Operation London Bridge" guided us through the official period of mourning. Truly, this has been a time that will be etched forever on the memories of all Elsworth residents. For many the sense of loss is profound and the realisation of the qualities Queen Elizabeth embodied over her unparalleled long reign is coming to the fore. Her grace and humility in carrying out her duties were boundless, a shining example to all, especially those in public life. Her sense of duty towards others brought the reassuring sense of stability that was gained by all from her reign and cannot be understated: entries into local books of condolences will bear witness to this. We now have a new King, Charles III. Long live the King.

Some years ago, as Clerk, I was invited to an event that The Queen attended at Burghley House. An invitation was extended to three additional nominated parishioners, Janet Bell for her amazing efforts towards setting up the new community shop for the village, Sue Taylor, and to "Stoll". Many people will remember Stoll – Mrs Lilian Stollery - a real village character who at that time was herself over 90 years old and one of our oldest residents. What a day! Stoll outwalked both of us clutching her fold-up chair, determined to get a prime position to see the Queen. She got it and not only that, she got to stand on the podium the Queen had stood on. I'll never forget the enormous smile on her face as she waved to us from the podium. It said it all in terms of what the Queen meant to her, as she did to so many.

WATER SHORTAGE

Parish Clerks recently visited the County Archives to have a tour of the new facilities. An entry in Elsworth Parish Council's minutes of July 1921 brought a wry smile to my face. We have been consumed over the past years with the problems of flooding in the village but this entry showed such a marked similarity to climate change and the very dry summer we have experienced. Relating to the question of the lack of water supply to the village the District Councillor, one Mr Hodson, was asked what his council thought of the matter. Mr Hodson responded that "owing to the great and serious difficulty in obtaining water he was approached by several parishioners who really did not know how to obtain a supply of water. He had therefore laid the matter before his council who had decided that, subject to the acceptance of East Hunts Water Co., to have a standpipe erected at the crossroads".

The water co. agreed to supply the water for domestic purposes only. The standpipe was erected at the cost of about £7 and the water to the parish was measured by a meter fixed to the standpipe, the price of the water was at the rate of 3/- per thousand gallons. Arrangements were made for the water to be carted around the village. A week's delivery trial was agreed and Mr Hodson supplied a horse and cart for the week for a shilling an hour. A Mr Bishop agreed to do the delivery for a week for a shilling an hour. Parishioners would be charged a penny a bucket for delivery, although it was agreed that people could fetch water from the standpipe themselves for various sums, depending on the size of the container. Interestingly, Mr Hodson retained the key to the standpipe!

CURRENT PARISH COUNCIL ISSUES

The Parish Council is still engaged with many issues as well as flooding, parking and road safety being one. A meeting has been arranged with County Council safety officers to reassess traffic and parking in Broad End. The crossroads by the Mill are also being reassessed by County officers following the serious accident there a few weeks ago. The Parish Council will be considering making a bid for funding under the County Council's Local Highways Initiative to improve road safety. This funding is not guaranteed as there are limited resources and grants depend on financial contributions from the parish, which can prove prohibitively expensive. The Play Area is still under consideration for provision of more amenity facilities.

PLANNING APPLICATIONS RECEIVED

22/03268/FUL 18 Paddock Row Elsworth Cambridgeshire Demolition of existing conservatory, followed by new side extension and minor works to existing porch. PC: no objections

22/03219/ 41 Boxworth Road Elsworth Cambridgeshire CB23 4JQ Erection of dwelling to the rear of the George and Dragon Public House, change of use to garden land including existing relocation of gas tank, realignment of car park to public house, and new access ramp to public house. PC recommendation: OBJECT, with comments

PLANNING APPLICATIONS GRANTED

- 20/05351/NMA1 15 Cotterells Lane Elsworth CB23 4JR
- 22/02531/S73. S73 Variation of condition 2 (Approved plans) of planning permission 21/02515/FUL Elm Lodge Meadow Drift Elsworth Cambridgeshire
- 22/0680/TTCA. Recreation Ground Broad End Tree works

APPLICATIONS FOR INFORMATION ONLY

20/04791/CONDB 20/04791/FUL Land to The South Of 29 Brook Street Elsworth

DATE OF NEXT PARISH COUNCIL MEETING.

November 16th 2022



Mrs Stollery on the Queen's Podium in 2012

Andrina B

the footcare specialist

Nail Cut • Callus • Athlete's Foot • Hard Skin
Corns • Fungal Infections • Plantar Faciitis
Orthotics • In-Growing Toe Nail • Foot Massage

To book your appointment contact Andrina on
07966 571 686 / e: andrinab@foot-care.co.uk

www.foot-care.co.uk

Andrina Baldock, Foot Health Practitioner, SAC Dip. FHPP FHPT
Register for Foot Health Practitioners Member

NEED A NEW FENCE?

DP FENCING

**WILL SUPPLY, ERECT AND REPAIR
ALL TYPES OF DOMESTIC FENCING**

For a **FREE** quote please contact

T: 07394521548

E: dpfencing@hotmail.co.uk

Ash Croft Veterinary Surgery

169 St Neots Road
Hardwick
Cambridge
CB23 7QJ

Tel: 01954 210250

Unit 1, Pendrill Court
Ermine Street North
Papworth Everard
CB23 3UY

Tel: 01480 831615

Consultations by Appointment Only

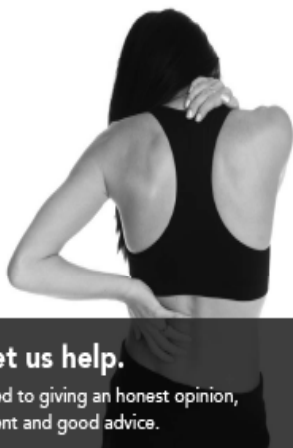
A comprehensive service for domestic pets including:
Surgery; Micro-chipping; Acupuncture & Reptile Clinic

www.ashcroftvet.co.uk



CAMBOURNE OSTEOPATHS

Back Pain
Neck Pain
Joint Pain
Headaches
Muscle Spasm
Sports Injuries
Arthritis
& much more



In Pain? Let us help.

We are committed to giving an honest opinion,
effective treatment and good advice.

Appointments Mon-Fri Regus, 1010 Cambourne
01223 598558 Business Park, CB23 6DP

Book online: www.cambourneosteopaths.com
Email: practice@cambourneosteopaths.com

GM SHARP LANDSCAPES LTD

ALL ASPECTS OF HARD & SOFT LANDSCAPING

FENCING & DECKING
PATIOS & GARDEN WALLING
BLOCK PAVING & DRIVEWAYS
PONDS & WATER FEATURES
TURFING & ARTIFICIAL LAWNS
GARDEN DESIGN & LIGHTING
COMPLETE GARDEN MAKEOVERS

FREE ESTIMATES & ADVICE

☎ 01223 751175 ☎ 07800 577617

✉ gmsarplandscapes@googlemail.com

SEE OUR WORK ON 

www.gmsarplandscapes.co.uk

Cambourne Self Storage

24 Hour Access 7 Days a Week 365 Days a Year

24 Hour Remotely Monitored CCTV

Sensor Flood Lighting

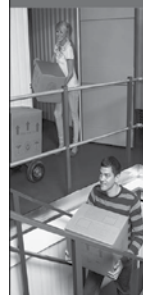
Keypad Entry and High Security Locks

Vehicle Access Directly to Unit Doors

01767 676189

www.CambourneSelfStorage.co.uk

Quality Bespoke Secure Storage



Easy to open & fast to access. High security with PIN codes, megapixel CCTV cameras & individual room alarms. Choose the size you really need. Store just about anything, for any length of stay. Clean, dry & condensation free. Friendly & helpful service. Viewings by appointment.

MoreSpace

Located at Manor Farm,
Graveley, PE19 6PH. Mention
PNV11 to receive £5 discount
on your first months rental.

• Home • Document • Commercial



morespacestorage.co.uk Call 01480 830130 to reserve yours today

TAI CHI

For Health and Energy

FREE INTRODUCTORY SESSIONS

ALCONBURY: SAT, 3 SEP, 12:30 PM
THE PAVILION, ALCONBURY
HUNTINGDON PE28 4LT

HUNTINGDON: MON, 5 SEP, 7 PM
HUNTINGDON METHODIST CHURCH HALL
17 HIGH ST, HUNTINGDON PE29 3TJ

CAMBOURNE: TUE, 6 SEP, 6 PM
CAMBOURNE TAI CHI STUDIO

ST NEOTS: WED, 7 SEP, 6:30 PM
PRIORY JUNIOR SCHOOL

LONGSANDS RD, SAINT NEOTS PE19 1TF

JASON KIRBY

*Professional Painting
& Decorating Ltd*

*A Professional Service
from Start to Finish*

Tel: 01954 211775

www.jasonkirbyltd.co.uk



EST 1973
QUINCE
Stoneworks

MARBLE,
GRANITE
& QUARTZ
WORKTOPS

Templated supplied and installed onto new units or as
replacement tops. Combining modern machinery with
traditional skills. All major brands of quartz supplied.

Tel: 01767 314180

STONWORKS: 3 Potton Road • Biggleswade • SG18 0DU
SHOWROOM: 83 High Street • Biggleswade • SG18 0LA

www.qstoneworks.co.uk



S NUNN BRICKWORK

Extensions • Garden Walls
Chimney Repairs • Repointing

t: 07988 623 195

e: snunbrickwork@outlook.com

NC AND PLUMBING HEATING

Gas, LPG, Oil servicing,
installation and repairs,
all plumbing works undertaken

Tel: 01223 870580
www.nutcombcambridge.co.uk

Jim Edwards
Gas appliances, Plumbing and Heating

Gas Boiler service from £59.
Bathrooms, Showers, Cookers, Fires, Taps,
Gas safety checks, landlord certificates,
Local Friendly service. All plumbing work undertaken
01954 267054 07870520702
jim-edwards@live.co.uk
www.cambridge-plumber.co.uk

J. HALSTEAD
— PLUMBING & HEATING —

INSTALLATIONS • REPAIRS • SERVICING

Complete Bathroom Installations
General Plumbing Repairs
Pipework and Drainage for Kitchen Appliances
Radiators and Towel Rails Installed
Power Flushing

 CALL JOHN FOR A **FREE QUOTE**
07570 387 684 • 01480 830 329
www.jhalsteadplumbing.co.uk

CAMBOURNE VEHICLE SERVICES
The Drift, Bourn, Cambridge CB23 2TB

Tel: 01954 719039

www.cambournevehicleservices.co.uk
info@cambournevehicleservices.co.uk

- * **SERVICING FOR ALL MAKES**
- * **M.O.T's (UP TO 3.5 TONNES)**
- * **EXHAUST SYSTEMS SUPPLIED AND FITTED**
- * **TYRE SERVICE - SUPPLIED AND FITTED**
- * **COURTESY VEHICLE AVAILABLE (BY PRIOR ARRANGEMENT)**
- * **AIR CONDITIONING SERVICE**

ALL VEHICLE WORK UNDERTAKEN

 **FREE collection and delivery**

Quality Vehicle maintenance
adjusted to suit your pocket

Free collection and delivery applies to the local area only

 **iancritten**
accountancy ltd



12 Varrier Jones Drive, Papworth Everard, Cambridge, CB23 3GJ
01480 831 422 www.critten.co.uk info@critten.co.uk

Providing quality accounting and taxation solutions to individuals and all businesses. Cloud accounting solution specialists.

Accounts - Tax returns - PAYE - VAT - R&D claims
Xero & QuickBooks online certified professional advisors



Paul Braybrooke

Oil Fired Boiler Engineer

Boiler Servicing & Breakdown Service
Commissions & Tank Replacements

Phone
01353 777788
07946 735691

Advertising Space Available

IF YOU ARE READING THIS THEN SO COULD POTENTIAL CUSTOMERS

janetpendrill@gmail.com



From £895*
for a fully fitted electric garage door.
WAS £1354 INCLUDING VAT

Garolla got a Garolla.

Garolla garage doors are expertly made to measure in our own UK factories, they're strong and solidly built. The electric Garolla door rolls up vertically, taking up only 8 inches inside your garage, maximizing valuable space. Our expert local installers will fit your new door and they'll take away the old one too, so there's no mess.

Give us a call today and we'll come and measure up **FREE** of charge.

GAROLLA
ROLL UP
ELECTRIC
DOORS

www.garolla.co.uk

CALL US TODAY ON:
01954 750 027
MOBILE
07537 149 128

LIMITED WARRANTY

Cricket Team falls just short!

Sadly, despite a great season, Elsworth CC fell just short of promotion from CC J5W after two hard fought losses against league winners Northstowe CC. Needing a win on the last day of the season, Elsworth asked Northstowe to bat and restricted them to 218/7 with some great bowling by Dan McClure and Peter Liddle giving Elsworth a slim chance at the halfway stage. Sadly, despite a classy 40 from Jamie Morgan and a hard earned 23 from ESC Chairman Rob Hector, we fell 47 runs short. With NCI winning both of their games in hand, Elsworth slipped to 3rd and will compete in J5 again next summer. Well played everyone, better luck next season!

Football is back in Elsworth!

Elsworth FC has been reborn after a near decade long absence. The plan will be to play friendly games at the weekend over the Autumn, Winter and Spring of 2022/23. Players of all ages (16 and over) and abilities are welcome, with the emphasis being very much on having fun and getting to know people from the village. Do not worry about fitness levels or any injuries from days gone by. We will be implementing a strict rolling substitution policy, especially as half the players who have signed up so far have not played in 15 years! Contact ESC Chairman Rob Hector via chairman.esc@outlook.com or on 07860 188928 if you fancy giving it a go.

Sports Field Activities at the Show



Table Tennis season set to commence

The new Table Tennis season begins in the autumn. Elsworth will continue to have 3 teams representing the village in the Ely & District Table Tennis League and Cambridgeshire Table Tennis League. Contact Roger Fensom for more details: treasurer.esc@outlook.com

