

ELSWORTH TIMES

THE COMMUNITY NEWSLETTER FOR ELSWORTH

AUGUST 2022

400 COPIES DISTRIBUTED EVERY TWO MONTHS

ISSUE 22 - 04

And the Result was . . .



In February, at an Emergency General Meeting of the Elsworth Pre-School, a County Council representative announced that the Pre-School would be closing, following the sudden resignation of the Board of Trustees and the Manager, unless a new Board of Trustees could take over with immediate effect.

Well – we couldn't let THAT happen! Three of us stepped forward as the new Board of Trustees while others volunteered to help with fund-raising. The County Council representative provided the necessary training, support and encouragement, and we hit the ground running.

Recruiting a new Manager was our first priority. Thankfully, Jenny Blyth, a previous Deputy Manager at the Pre-School, applied, and was duly interviewed. Her credentials and enthusiasm were a perfect fit, especially as she already knew the setting. Jenny took up her post at the beginning of March, much to the joy of the other staff members, and a major transformation immediately began to take place.

We joined with the staff as they launched into voluntary re-organising, redecorating, refurbishing, re-stocking and uncluttering – all with a great deal of enthusiasm, laughter and pizza.

The reintroduction of Forest School was a huge success,

and we are seeing other new ventures and improvements day by day. The earlier drop-off time of 8.30am is now available, as are Friday afternoon sessions, and we are looking to provide wrap-around care as soon as possible.

In the midst of all this, we received an unannounced Ofsted visit at the end of May. The last rating had been 'good' with recommendations for improvement. We were fervently hoping that we could hold on to that – but we are thrilled to report that we received an 'OUTSTANDING' rating in every category, with no recommendations! This is a first for the Pre-School and so encouraging as we move forward.

So – our next challenge. We desperately need a new building! The present one is nearing its end and we are applying for grants, funding, rich relatives... If you can contribute in any way, we would love to hear from you. Please help to support us and publicise our efforts towards this goal.

Finally, we can't thank our wonderful staff enough. Jenny, Sophie, Catherine, Fiona and Bex have made this possible through their hard work and commitment. We look forward to great times ahead!

Clair Harrison, Chaya Robertson, Karolina Sturgólewska
elsworthpreschool@outlook.com / 01954 268050

USEFUL NUMBERS

Elsworth Times Editor

Sue Taylor – set.taylor@btinternet.com

Elsworth Times Adverts

janetpendrill@gmail.com

Police Community Support Officer

Non Emergency - 101

Emergency - 999

Community Fire Safety Officer

01223 376217 or Emergency - 999

South Cambridgeshire District Council

08450 450500 or 01954 713000

Parish Clerk

Liz Sim - 01954 267664

clerk@elsworthvillage.com

Parish Council Web site address

<https://elsworth-pc.org.uk>

Doctors' Surgery

Papworth - 01480 830888

Bourn - 01954 719313

Appointments 01954 719469

Parish Church Contacts

Chris Westgarth - Team Administrator

01480 839933

The Rev Nigel di Castiglione

01954 267241

Elsworth Primary School

01954 267272

Elsworth Show

Sonia Hegan - 01954 267743

Elsworth Sports Club & Pavilion

Secretary - Chris Woodbury

secretary.esc@outlook.com

Bookings for the pavilion Kim Pleszko

bookings.esc@outlook.com

Swavesey Village College

01954 230366

Elsworth Shop

01954 267951

www.elsworth-shop.co.uk

Tree Warden

Paul Harding - 01954 267218

Fardell's Lane Nature Reserve

Louise Hanzl - 07785 614303

Elsworth Walking Group

Contact Tom or Lyn

01954 267166

Tom&LynHogan@pathwaysystems.co.uk

The Editorial Team



Sue Taylor

Sue has lived in the village since 1998, with Anthony and their three children who all went to Elsworth Primary School. Apart from a two year period when Sue and Anthony moved to Great Gransden she has been involved in many village activities. Formerly a doctor and a Garden Designer she is now fully retired but is being kept busy as she and Anthony work on the design of their Eco house.



Ruth I Fleischer, BA, MA, PhD

Arriving in the UK in 1988 from San Francisco, CA., to work with a synagogue in London, Ruth has been the rabbi of B'Nai Maccabim Synagogue since 1997.

Before coming to the UK, she was a writer and editor, also working as a communications specialist for a religious organisation.

She moved to Elsworth with friend, Chaya Robertson, in 2019 and is now serving on the Elsworth Pre-School Committee.



Clair Harrison

Originally from Nottingham, but growing up in North Yorkshire, Clair has lived in Cambridgeshire ever since marrying a Southerner! An ex-Primary School Teacher, she now spends her time tutoring English as well as being a Governor at Elsworth school and is a trustee at the pre-school.



Chaya Robertson

Originally hailing from Edinburgh, Chaya worked in the NHS before moving south with her late husband, after which she turned her hand to a variety of different jobs from sales to funeral director. She is the Cantor of B'Nai Maccabim Synagogue, working alongside Rabbi Dr Ruth Fleischer and, in her spare time, she is the Assistant Manager of our Village Shop, Trustee of our Pre-School, and Clerk to the Samuel Franklin Trust.

IMPORTANT DATES

Mobile Library – The Poacher, Second Thurs of the month 2.35pm - 2.55pm

Post Office services from the pavilion: Tues 2-4, Thurs 12-2pm

BIN COLLECTION DATES

Bin Dates	Black Bin	Blue Bin	Green Bin
Thu 18 Aug 2022		✓	✓
Thu 25 Aug 2022	✓		
Fri 2 Sep 2022		✓	✓
Thu 8 Sep 2022	✓		
Thu 15 Sep 2022		✓	✓
Thu 22 Sep 2022	✓		
Thu 29 Sep 2022		✓	✓

Access News

Accessible Church & Community Events Space (Elsworth)

Thanks to everyone who made the Great Potato Grow-off such a success. This event will be held annually so if you didn't win a cup this time, you'll have another chance next year. Congratulations to the winners! Those of us who were present at the weigh-in know their growing secrets - we predict next year will be highly competitive!



Our next event will be a Disco Ceilidh on Saturday 3rd September on the Grass Close. Tickets £10 with proceeds split between ACCESS and the School. Look out for us at the Elsworth Village Show on Sunday 4th September where we will be showing the church development plans and selling yummy popcorn,

Elsworth Great Potato Grow Off 2022

The results have been scrutinised by the Landlord of the Churchyard (where the weigh-in took place) and are therefore authorised.

We sold 85 potato kits earlier in the year and of these we had a very creditable 50 entries on Saturday 2nd July - 17 in the Under-12 category and 33 in the Over-12 category.

We are publishing the top five names in each category to protect the innocent and the embarrassed.



The purpose, of course, was not (really) to establish the best potato grower in the village but to raise funds for, and the profile of, Access Elsworth. The significant subsidiary benefit was and is to encourage the pleasure of growing and eating food nurtured by your own hands.

For 2023 it is likely that techniques will be honed, entries increased and records to tumble.

In the meantime, many congratulations to the individual winners Paul Harding and Beatrice, Flo and Ross Ingham (who I gather have set up a consultancy business dispensing technical advice).



Under 12 Individual Potato

Name	Individual weight
Beatrice Ingham	260
Flo Ingham	180
Abi Crisp	97
Will Plugge	95
Oliver Burt	89

Range 48-260 g

Under 12 Total Net Weight

Name	Total net weight
Flo Ingham	1368
Beatrice Ingham	1329
Will Plugge	834
Jonathan Plugge	785
Andrea Crisp	420

Range 120-1368g

Over 12 Individual Potato

Name	Individual weight
Ross Ingham	219
Harriet Rhodes	190
Sue Taylor	186
John Witherow	163
Paul Harding	160

Range 31-219g

Over 12 Total Net Weight

Name	Total net weight
Paul Harding	1487
Ross Ingham	1277
Sue Taylor	1210
John Witherow	1160
Ken Rhodes	849

Range 201-1487g

Open Studios Elsworth 2022

There were five artists exhibiting in Elsworth this year for the Cambridge Open Studios Event. We managed to visit all the venues, and have chosen some of our favorites from each.

Sarah and Jessica Hutchinson, Studio 185, The Drift, Elsworth

Wandering in from The Drift on a hot day and finding a light and airy studio to the side of the garden, was rather like entering an oasis! I had not been to this studio previously, despite living quite close by, and was delighted with the lovely and distinctive natural landscapes and animal portraits of both mother and daughter.



Sarah, who has been participating in the Open Artist's Studios for 6 years, presents us with charming drawings, pastels, watercolours and acrylics. I was particularly taken with her large animal portraits, especially the two impala. Sarah also offers art classes for children.



Jessica, who works in gouache, watercolour and digital design, is offering her work for the first time this year. While her style is quite different from that of her mother, one can observe the familial love of nature and animals in her work as well.

The work of both artists is well worth seeing, even if you have missed the open days in July.

Ernie Butler, F.R.S.A., Studio 186, Smith St, Elsworth

For something completely different, a short walk down the hill led us to Ernie Butler's studio, situated at the back of his long garden. Here we found some of the most atmospheric of seascapes, including several remarkable pieces showing Venice in an altogether different light. Although far from the only subject of his paintings and drawings, I did find his seascapes the most arresting. However, his subjects include religious themes and landscapes as well.



Ernie, who is new to Elsworth, told us that he worked with the Arts Council, especially during covid, using art to help Alzheimers patients and others.

Contact Ernie if you are interested in developing your own artistic skills.

Ann Brown, Church Lane, Elsworth

Walking through the garden to the top of the slope you will find a shed with a difference. A romantic artistic hideaway is where Ann displayed her work, and as with all the artists in Elsworth, gave a warm welcome to visitors to her studio



Ann is a former art teacher, and says she has drawn and painted all her life. Her studio was full of pencil drawings and watercolour pictures mostly of landscapes and all in exquisite detail. My photos don't do justice to the works here, as reflections were a problem, but I'm sure you will recognise some of these scenes.

Sherry Rea, Carpenters, Broad End, Elsworth



Sherry has been an artist for the last 14 years, after taking an art A level as an adult. Her work is mainly in printmaking and paint, and her subjects are largely from the natural world, inspired by her background as a biological scientist. Displayed in her bright and airy studio, framed and unframed pictures were hung for viewing, as well as a selection of prints to leaf through. Beautiful gentle colours and calming

subjects are a feature of her work. As well as exhibiting in local galleries, Sherry also runs some small printmaking workshops

Elsworth's First Disco Ceilidh!

7.30pm, Saturday 3rd September

Grass Close by the Sports Pavilion

This year Elsworth will have it's first Disco Ceilidh to raise fund for Elsworth CoE Primary School and Elsworth ACCESS. A ceilidh is a Scottish group dance like a barn dance where a caller will teach you the dance then guide you through the moves to the song. As well as some traditional Scottish reel music a disco ceilidh includes more modern music. Music includes some cheesy classics from the 80s and 90s, be prepared for Steps, YMCA and disco classics by "Earth, Wind and Fire"!

It should be a fun evening, everyone is welcome whether you're dancing or just enjoying the social side. No stilettos please! Tickets are £10 for adults including your first drink of the evening. There will be a pay bar open from 7.30pm with dancing starting at 8pm. Tickets are available from the village shop or email Elsworth.pta@gmail.com. With thanks to the Show committee for allowing use of their marquees.

Elsworth Kids Disco

6pm – 7pm, Saturday 3rd September

Grass Close by the Sports Pavilion

Elsworth PTA is running a kids disco. Tickets are £3 for children, adults free but do need to stay to supervise their children. There will be soft drinks and sweets available to buy. Tickets from the village shop or email elsworth.pta@gmail.com





Elsworth School

We have had a busy and entertaining end to the Summer term at Elsworth C of E Primary School. It has been lovely to welcome parents and friends back into school. The first highlight was an amazing and very entertaining performance of 'Pirates of the Curry Bean'. The audiences thoroughly enjoyed the show.

At the beginning of July, the children in Year 5 and 6 set off for Eaton Vale for their 5 day residential trip. The children enjoyed a range of outdoor activities that included: backwoods cooking, climbing, kayaking, air rifles, canoeing and many more. The children and staff had lots of fun!

It has been lovely to welcome our new Reception intake for September. They enjoyed their 'Stay and play' sessions in Sapphire class as well as an afternoon picnic on the school field.

We ended the term with our Sports Day and planting Jubilee seeds and saplings, donated by the Parish Council, with Louise Hanzi in the Fardell's Lane Nature Reserve.



ELSWORTH PRE-SCHOOL

Following our Ofsted Inspection in May we are delighted to share with you that we have been rated Outstanding in all areas! The feedback included "Children are exceptionally confident and thrive in Pre-School." This is an achievement that we are all very proud of and this could not have been achieved without our amazing children, families and committee, thank you all for your continued support.

Sports day saw our children participating in a variety of races both traditional and modern, encouraging one another and celebrating each other's achievements in the company of their families and key stage one of Elsworth Primary School. These collective events create special memories for our children and families alike. It was safe to say the balance bike race was the favourite!

At Forest School our children have been exploring colour mixing as they created natural paints that are kind to the environment. This also created the opportunity to explore the scientific concepts of liquids and solids as they mixed ingredients to make paints for different purposes.

Our summer trip was to Little Wren's Forest School

As the summer has come to a close it is time to say goodbye and good luck to all of our amazing school leavers as they go on their next adventure of school, we are so proud of each and everyone of them and all that they have achieved and we know that they will succeed in all that they do.

We also look forward to the new academic year and all of the exciting things to come including welcoming children both old and new to Pre-School to play, learn and wonder about the world around them.

If you would like to visit and see our welcoming, friendly team and learning environment please do get in touch we're always happy to help and answer any questions you may have.



Telephone: 01954268050 email: elsworthpreschool@outlook.com website: elsworthpreschool.org

HOLY TRINITY CHURCH - ELSWORTH



How are you feeling?

It's hot. It's even hotter in parts of mainland Europe; an excellent time to be in the business of making and selling ice creams! As some suffer others prosper. This is true in small matters as well as the big issues facing the world at large. The biggest lesson we can all share is that we can't control everything that happens to us and around us. This highlights the importance of how we respond or react,

not least because those around us are impacted by whether we are irritated and troubled or at ease and in good fettle.

The Christian tradition highlights what we can do with our feelings and responses. One option is to embrace a disposition of thankfulness. On one occasion the Bible says, 'Give thanks in all circumstances.' The important word here is IN; we are to be thankful IN all circumstances which is very different to being thankful FOR everything happening around us.

I suspect we underestimate its' importance, but its prominence or absence has a bearing on our relationships with others. Most of us prefer to be with people disposed to being thankful and try to steer a path away from others who never seem to stop whingeing!

There's an old hymn some may recall or have even sung.
The first verse and chorus is,

*When upon life's billows you are tempest tossed,
When you are discouraged, thinking all is lost,
Count your many blessings, name them one by one,
And it will surprise you what the Lord hath done.*

Refrain:

*Count your blessings, name them one by one;
Count your blessings, see what God hath done;
Count your blessings, name them one by one;
Count your many blessings, see what God hath done.*

It may seem quaint and twee, but it carries a message that has shaped more contemporary versions, both sacred and secular. The end of an academic year and, for some, the opportunity for some form of holiday is a good chance for some breathing space and some moments for taking stock as well as outlining thoughts and ideas for a new year ahead.

Let me encourage you to use thankfulness as the backcloth; make the effort to see what God has done as the strategy for both review and planning. We may find the results surprising and leave us feeling hopeful rather than merely hot and bothered!

Nigel di Castiglione - Team Rector

theWI ELSWORTH INSPIRING WOMEN Knapwell AND CONINGTON

Our WI July meeting is a special occasion, with WI business of course included, but with no speaker arranged so there is more time for socialising. Because 2022 is Jubilee year we decided that we should celebrate the uniuqe event with prosecco and strawberries in place of tea and sandwiches.

Our new venue, the Elsworth Sports Pavilion, is a pleasant place to have a summer meeting with the doors open to the field and a nice breeze to cool everyone down on a hot evening.

Glasses of prosecco were enjoyed and the strawberries and cream were complimented by shortbread baked by Sylvia Moore. We then were divided into groups to tackle a comprehensive quiz with respect to the royal occasion on the Queen and her family with lots of tricky questions and photos. We probably once knew the answers but in many cases had forgotten eg "What was the name of the horse that Queen Elizabeth rode while Trooping the Colour?"

The WI doesn't meet in August. Our next meeting is on Wednesday, 14th September when the speaker is Dr Maureen James on "The Pankhursts, War & Haile Selassie".

Anyone considering joining our WI is very welcome to come along to a meeting and see what you think before formally joining. If you are interested or would like more information please email me on margms@hotmail.co.uk or call me on 07784395382.

Margaret Stevenson

COMMEMORATIVE JUBILEE TREE

If you walk through Fardells Lane Reserve you should be able to spot the Platinum Jubilee Memorial Tree, complete with guard and plaque, beside one of the main paths through the reserve and now nicely fronted by the wildflower mound planted by children from Elsworth School.

The tree has an interesting history. It came to our Tree Warden, Paul Harding, in January 2021 from the Tree Council as part of a scheme to commemorate 30 years of the national Tree Warden Scheme. It was a bit feeble on arrival but Paul nurtured it in a pot for a year and in January this year it was planted in Fardells Lane Reserve by a volunteer work party from the village. When the Parish Council decided to have a tree to mark the Jubilee it was thought this particular elm was a very suitable tree for the occasion.

The tree is a hybrid elm, actual name *Ulmus x Wingham*, and therefore is resistant to Dutch Elm Disease which devastated the English elm in the 1970's. Because the elm was planted in the Jubilee year it will be part of the Queen's Green Canopy, an initiative to mark the Jubilee and encourage the planting of trees across the UK, providing a green and lasting legacy of her reign.



Fardell's Lane Nature Reserve Update

We have been busy making a flower mound in the reserve so the school children can plant wildflowers grown from seeds given to them in April by the Parish Council in celebration of the Queen's Platinum Jubilee. On Wednesday 13 July children from Ruby, Emerald, Aquamarine and Diamond classes walked over with their teachers and each class planted seeds, seedlings and plants in the mound. It was a lot of fun for everyone.



After the children left we made a temporary enclosure to protect the plants until they become established. A lot of people helped make this happen, too many to name everyone but particular

thanks to Ken Brocksom, Jane Eastwood, Tim Egan, James Howell, Margaret Stevenson and Ed Quince. Huge thanks also to everyone at the school and especially to Ruby class who sent us handmade thank you cards which we were thrilled to read.

Andy Bowers kindly donated a bat box and we have two more donated bird boxes which is great news. Please let me know if you would like to donate a bird/bat box or join the work parties.

Louise Hanzi – thehanzis@gmail.com



ELSWORTH VILLAGE SHOP

USE IT OR LOSE IT!

At our recent AGM we said a huge 'thank you' and a sad farewell to our two 'Jans'. Janet Bell, stalwart of the Management Committee, is heading to pastures new 'Up North'. Jan Parr, our long-serving Manager is retiring – but will still be helping out in a voluntary capacity. These ladies have worked tirelessly, and we can't thank them enough.

Our Treasurer reported that, between rising costs and our attempts to keep prices down, our shop profits are definitely on the decline! We have provided our service to the village for over 10 years and want to continue to do so - but we need the profits to pay the bills and to maintain the shop.

So - we would like to encourage everyone to make use of the shop. Every purchase makes a difference so please come and buy - and encourage your friends to come too!

ELSWORTH JUBILEE CLUB

meets in the SPORTS PAVILION, BROAD END
on the first Thursday of each month, beginning at 2.30pm

Thursday, September 1st—Rabbi Dr Ruth Fleischer
"Making Memorable Moments"

Thursday, October 6th—Anthony Taylor, RCVS
"All About Being a Vet"

Thursday, November 3rd—Emma Saunders
"MAGPAS"

Thursday, December 1st—Chaya Robertson
"A Wee Dram—The Story of Single Malt Whiskey"

PLUS! - THE CHRISTMAS AFTERNOON TEA!



CLERK'S COLUMN

LIZ SIM PARISH CLERK

Telephone: 01954 267664

e-mail: clerk@elsworthvillage.com

Change of membership of the Parish Council

Lawrence Seifert and Tim Hegan were welcomed onto the Parish Council as co-opted members at the July Parish Council meeting. Victoria McNeill announced her resignation as she is moving from the village. Members thanked her for her contribution to the work of the council over the past years.

Elsworth Preschool grant.

Councillors congratulated the preschool on its recent excellent OFSTED inspection. Members welcomed the Preschool's proposed project for renewal of equipment and agreed unanimously to award a grant of 50% of the estimated costs of the project up to a maximum of £900.

New Children's play area



The new children's play area is almost complete and should be open for the children to enjoy by the time this edition of the ET drops through your door.



Proposal for a food park at Avenue Farm

Councillors received a report on proposals to change the offices at Avenue Business Park into a food park. The Parish Council is pressing for a public meeting for residents to receive more information and to be able to express their views.

Car parking issues in the village

Car parking issues in areas of the village were discussed and are being followed up.

District and County Council updates.

The new District Councillor, Peter Sandford, introduced himself to members and updated them on which DC committees he is a member of.

County Councillor Mandy Smith reported

- Cambridge County Council's Local Highways Initiative bids will be opening shortly and she encouraged councillors to apply for funding for highway improvements in the village.
- The Age UK Warden scheme running in Fen Drayton is looking for assistance from other villages. The PC had considered participating in the scheme previously but had felt that it was too costly. Cllrs agreed to enquire anew about costs.
- A travelling exhibition giving flood advice was held in Hilton. It is hoped that the exhibition will be able to come to Elsworth.

Draft Local Plan

This has been published and a further invitation issued for developers and landowners to resubmit/submit sites. A development of ten thousand houses south of Knapwell and Elsworth has been put forward again. A new submission for substantial development near Meadow Drift has also been put forward, a planning application for which was rejected previously by Planning Inspectorate.

East West Rail

The Chairman gave councillors an update on the A428 Cluster Forum meeting on 6 July and the EWR drop-in event in Cambourne. He also referred to the letter written to Grant Shapps by 'local leaders' supporting the completion of the EWR project (posted on the Elsworth & District Forum facebook page), while Peter Sandford reported that another letter had also been sent to Rishi Sunak. D.Cllr M Howell reminded members that he had opposed the EWR route plans and continued to do so but reminded members that Cambourne Town Council was continuing to favour a station

to the north of the A428. The continuation of the whole EWR project is uncertain given the current political climate and the possibility that the costs of the project will prove too high.

Holy Trinity Churchyard

The Rector attended to the Parish Council open forum to talk about maintenance of the closed burial ground in the churchyard. The PC agreed that the chairman should discuss matters with him and report back to the PC meeting in November.

Planning

Planning Applications considered.

- 21/02515/FUL 22/02531/S73 Elm Lodge Meadow Drift Elsworth

Application for Removal or Variation of a Condition (Section 73).S73 variation of condition 2 (Approved plans) of planning permission (Demolition of existing bungalow and construction of a 5 bedroom replacement dwelling together with garage, driveway and landscaping) to remove the basement floor of the house and remove the sunken courtyard, to provide new plans for the ground and second floor, and extend the permitted garage to provide an additional car parking space and larger home office. PC recommendation: Although the proposed alterations represent a substantial change in the proposed development since the PC comments made on the original application, the additional 'weight' of the house faces away from Meadow Drift toward the open fields and the PC has no additional comments to make.

- 22/00706/HFUL3 Brook Street Elsworth Cambridgeshire Retention of electric car charging point on wall of shed within curtilage of listed dwelling. No change to listed building. PC recommendation: Support.
- 22/01749/HFUL 10 Church Lane Elsworth Cambridgeshire CB23 4HU Single storey front extension. PC recommendation: Support
- Application for Works to Trees in a Conservation Area.

22/0680/TTCA Recreation Ground Broad End Elsworth

Proposal: T1 - Ash - Remove 2 branches that will severely overhang the new proposed play area. T2 - Walnut -

Remove 2 branches that overhang the new proposed play area. T3 - Elm - remove elm tree hanging over public footpath completely due to low level. PC recommendation: Support.

Notification of Planning Applications - For Information only

- 21/05369/LBC 15 Cotterells Lane Elsworth Cambridgeshire.

Submission of details required by condition 3 (Material) of planning permission

- 21/05616/FUL 5 Church Lane Elsworth Cambridge

Submission of details required by conditions 5 (Traffic Management Plan (TMP) and 8 (Surface and Foul Water) of planning permission

Reference: 21/05616/CONDA

Applications determined/closed by SCDC

- 20/01204/HFUL & 20/01205/LBC The Old Chapel Boxworth Road. Granted permission
- 21/05155/NMA1. 54 Boxworth Road Elsworth Cambridgeshire CB23 4JQ Granted Permission
- 22/01749/HFUL 10 Church Lane Elsworth Cambridgeshire CB23 4HU Granted Permission
- 20/04791/CONDA Land To The South Of 29 Brook Street Elsworth Cambridgeshire CB23 4HX Discharge Condition in Full
- 22/02104/S19LB 54 Boxworth Road Elsworth Granted permission

Appeals Determined

- S/4521/19/FL Martins Farm 53 Boxworth Road Elsworth Cambridgeshire CB23 4JQ Against Refusal of Permission Appeal Dismissed.

Dates of Parish Council meetings in 2022.

September 21st Parish Council Meeting

November 16th Parish Council Meeting

Reminder:

Parish Council meetings will be held in the Sports Pavilion Broad End.



What is a Beetle Drive?

On 12th July The Day Centre played a Beetle Drive. Players take turn to throw the dice. You must throw a six to start and draw the body. You must throw a five to draw the head, before you can draw eyes or antennae. Different numbers on the dice correspond to other parts of the Beetle: eyes,

antennae, legs and tail. The first person to complete the Beetle calls "Beetle" and has won the round and gets thirteen points, the other players get one point for each part completed. After a few rounds, the scores get added up to determine the overall winner.

If you are interested in joining the Day Centre or finding out more, either on your own behalf, or for someone you know, you can phone Jenny (number below). Please note it is not now necessary to be referred by your G.P. just give us a call.

The details of how the Day Centre runs are below:

The cost is £13 per day including tea and coffee and a delicious two course meal cooked by our resident chef, Jane. We meet every Tuesday between 10am and 3pm in The Community Centre, The Close, Papworth Everard. The Centre is fully wheelchair accessible. Transport is available in certain cases. If you would like to find out more about the Day Centre, why not call the following? We would love to hear from you.

Contact: Jenny on (01480) 492697 for further details, if there is no answer please leave a message or your name and number, and I will call back.



Andrina B

the footcare specialist

Nail Cut • Callus • Athlete's Foot • Hard Skin
Corns • Fungal Infections • Plantar Faciitis
Orthotics • In-Growing Toe Nail • Foot Massage

To book your appointment contact Andrina on
07966 571 686 / e: andrinab@foot-care.co.uk

www.foot-care.co.uk

Andrina Baldock, Foot Health Practitioner, SAC Dip. FHPP FHPT
Register for Foot Health Practitioners Member

NEED A NEW FENCE?

DP FENCING

**WILL SUPPLY, ERECT AND REPAIR
ALL TYPES OF DOMESTIC FENCING**

For a **FREE** quote please contact

T: 07394521548

E: dpfencing@hotmail.co.uk

Ash Croft Veterinary Surgery

169 St Neots Road
Hardwick
Cambridge
CB23 7QJ

Tel: 01954 210250

Unit 1, Pendrill Court
Ermine Street North
Papworth Everard
CB23 3UY

Tel: 01480 831615

Consultations by Appointment Only

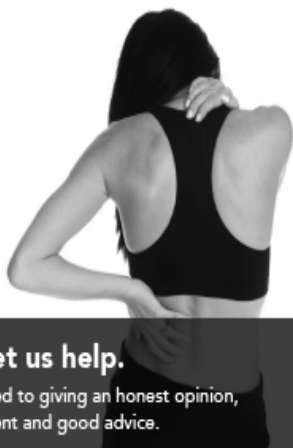
A comprehensive service for domestic pets including:
Surgery; Micro-chipping; Acupuncture & Reptile Clinic

www.ashcroftvet.co.uk



CAMBOURNE OSTEOPATHS

Back Pain
Neck Pain
Joint Pain
Headaches
Muscle Spasm
Sports Injuries
Arthritis
& much more



In Pain? Let us help.

We are committed to giving an honest opinion,
effective treatment and good advice.

Appointments Mon-Fri Regus, 1010 Cambourne
01223 598558 Business Park, CB23 6DP

Book online: www.cambourneosteopaths.com
Email: practice@cambourneosteopaths.com

GM SHARP LANDSCAPES LTD

ALL ASPECTS OF HARD & SOFT LANDSCAPING

FENCING & DECKING
PATIOS & GARDEN WALLING
BLOCK PAVING & DRIVEWAYS
PONDS & WATER FEATURES
TURFING & ARTIFICIAL LAWNS
GARDEN DESIGN & LIGHTING
COMPLETE GARDEN MAKEOVERS

FREE ESTIMATES & ADVICE

☎ 01223 751175 ☎ 07800 577617

✉ gmsarplandscapes@googlemail.com

SEE OUR WORK ON 

www.gmsarplandscapes.co.uk

Cambourne Self Storage

24 Hour Access 7 Days a Week 365 Days a Year

24 Hour Remotely Monitored CCTV

Sensor Flood Lighting

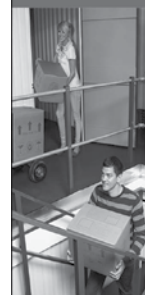
Keypad Entry and High Security Locks

Vehicle Access Directly to Unit Doors

01767 676189

www.CambourneSelfStorage.co.uk

Quality Bespoke Secure Storage



Easy to open & fast to access. High security with PIN codes, megapixel CCTV cameras & individual room alarms. Choose the size you really need. Store just about anything, for any length of stay. Clean, dry & condensation free. Friendly & helpful service. Viewings by appointment.

MoreSpace

Located at Manor Farm,
Graveley, PE19 6PH. Mention
PNV11 to receive £5 discount
on your first months rental.

• Home • Document • Commercial



morespacestorage.co.uk Call 01480 830130 to reserve yours today

TAI CHI

For Health and Energy

FREE INTRODUCTORY SESSIONS

ALCONBURY: SAT, 3 SEP, 12:30 PM
THE PAVILION, ALCONBURY
HUNTINGDON PE28 4LT

HUNTINGDON: MON, 5 SEP, 7 PM
HUNTINGDON METHODIST CHURCH HALL
17 HIGH ST, HUNTINGDON PE29 3TJ

CAMBOURNE: TUE, 6 SEP, 6 PM
CAMBOURNE TAI CHI STUDIO

ST NEOTS: WED, 7 SEP, 6:30 PM
PRIORY JUNIOR SCHOOL
LONGSANDS RD, SAINT NEOTS PE19 1TF

JASON KIRBY

*Professional Painting
& Decorating Ltd*

*A Professional Service
from Start to Finish*

Tel: 01954 211775

www.jasonkirbyltd.co.uk



QUINCE

EST 1973
Stoneworks

MARBLE,
GRANITE
& QUARTZ
WORKTOPS

Templated supplied and installed onto new units or as
replacement tops. Combining modern machinery with
traditional skills. All major brands of quartz supplied.

Tel: 01767 314180

STONWORKS: 3 Potton Road • Biggleswade • SG18 0DU
SHOWROOM: 83 High Street • Biggleswade • SG18 0LA

www.qstoneworks.co.uk



S NUNN BRICKWORK

Extensions • Garden Walls
Chimney Repairs • Repointing

t: 07988 623 195




e: snunbrickwork@outlook.com

NC AND PLUMBING HEATING

Gas, LPG, Oil servicing,
installation and repairs,
all plumbing works undertaken

Tel: 01223 870580
www.nutcombcambridge.co.uk

Jim Edwards
Gas appliances, Plumbing and Heating

Gas Boiler service from £59.
Bathrooms, Showers, Cookers, Fires, Taps,
Gas safety checks, landlord certificates,
Local Friendly service. All plumbing work undertaken
01954 267054 07870520702
jim-edwards@live.co.uk
www.cambridge-plumber.co.uk

J. HALSTEAD
— PLUMBING & HEATING —

INSTALLATIONS • REPAIRS • SERVICING

Complete Bathroom Installations
General Plumbing Repairs
Pipework and Drainage for Kitchen Appliances
Radiators and Towel Rails Installed
Power Flushing

 CALL JOHN FOR A **FREE QUOTE**
07570 387 684 • 01480 830 329
www.jhalsteadplumbing.co.uk

CAMBOURNE VEHICLE SERVICES
The Drift, Bourn, Cambridge CB23 2TB

Tel: 01954 719039

www.cambournevehicleservices.co.uk
info@cambournevehicleservices.co.uk

- * **SERVICING FOR ALL MAKES**
- * **M.O.T's (UP TO 3.5 TONNES)**
- * **EXHAUST SYSTEMS SUPPLIED AND FITTED**
- * **TYRE SERVICE - SUPPLIED AND FITTED**
- * **COURTESY VEHICLE AVAILABLE (BY PRIOR ARRANGEMENT)**
- * **AIR CONDITIONING SERVICE**

ALL VEHICLE WORK UNDERTAKEN

 **FREE collection and delivery**

Quality Vehicle maintenance
adjusted to suit your pocket

Free collection and delivery applies to the local area only

 **iancritten**
accountancy ltd



12 Varrier Jones Drive, Papworth Everard, Cambridge, CB23 3GJ
01480 831 422 www.critten.co.uk info@critten.co.uk

Providing quality accounting and taxation solutions to individuals and all businesses. Cloud accounting solution specialists.

Accounts - Tax returns - PAYE - VAT - R&D claims
Xero & QuickBooks online certified professional advisors



Paul Braybrooke

Oil Fired Boiler Engineer

Boiler Servicing & Breakdown Service
Commissions & Tank Replacements

Phone
01353 777788
07946 735691

Advertising Space Available

IF YOU ARE READING THIS THEN SO COULD POTENTIAL CUSTOMERS

janetpendrill@gmail.com



From £895*
for a fully fitted electric garage door.
WAS £1354 INCLUDING VAT

Garrolla got a Garrolla.

Garrolla garage doors are expertly made to measure in our own UK factories, they're strong and solidly built. The electric Garrolla door rolls up vertically, taking up only 8 inches inside your garage, maximizing valuable space. Our expert local installers will fit your new door and they'll take away the old one too, so there's no mess.

Give us a call today and we'll come and measure up **FREE** of charge.

GARROLLA
ROLL UP
ELECTRIC
DOORS

www.garrolla.co.uk

CALL US TODAY ON:
01954 750 027
MOBILE
07537 149 128

UNDERSTAND THE DIFFERENCE



Elsworth Cricket Team



Your Sporting Chance!

Elsworth Sports Club is under new management! At the A.G.M, Rob Hector was elected unanimously as the new Chairman, Christopher Woodbury has taken on the role of Secretary and ESC stalwart Roger Fensom agreed to continue as Treasurer. A new bookings manager, Kim Plezko, has also been appointed. Our sincere thanks go to departing Secretary Paul Harding and former chairman Bill Knibbs. The new committee are very keen to see the pavilion being used once again as a central hub of village life. Please do get in touch if you wish to host any family occasions, social events, and celebrations. We are very keen to welcome you!

Tired of driving miles to Zumba? Want to practice Pilates on your doorstep? We are running a "New Club" scheme until the end of 2022. Any new regular club/activity/event will be given one month's FREE use of the pavilion (Up to four hour sessions total) to allow them to build a solid foundation in the community. No cost, no catch. We just want to give new clubs a chance to set up shop in the village. You could set up a club yourself or ask your current instructor if they want to setup a new session in Elsworth risk free!

The village cricket team is making good progress this season. They currently sit second in the CCA J5W table with 4 more games remaining. Victory in 3 out of 4 should be enough to confirm promotion, whilst 4 wins from 4 would secure a first league title in many years. New Secretary Chris and Dan McClure currently lead the way in the batting and bowling departments, with 539 runs and 24 wickets respectively. The team has welcomed 7 new players this season to their mid-week and Saturday teams and is always happy for further additions. We meet to practice on a Thursday evening on the playing field.

The new Table Tennis season begins in the autumn. Elsworth will continue to have 3 teams representing the village in the Ely & District Table Tennis League and Cambridgeshire Table Tennis League. Contact Roger Fensom for more details: treasurer.esc@outlook.com

There have been discussions of re-launching Elsworth FC! A proposal is in place for a men's Sunday friendly team to begin playing in September. If you are interested, please contact Rob Hector on chairman.esc@outlook.com or send us a message on our Facebook Page.



The 64th Elsworth and District Show

Sunday 4th September 2022

At the Pavilion and Sports ground

From 1.30pm

To be opened by Mousumi Bakshi, from Look East

All the usual attractions and refreshments to celebrate the end of summer

Photo classes	The Jubilee Our Village Peace Windows
Adult Art	This year there is an extra class - Jubilee - any medium There are new Handicraft classes - Woodwork and ceramics/pottery
Children's art	The Crown Handicraft - Crown from recycled materials
Floral classes	Platinum Jubilee Blue and yellow Arrangement in an egg cup

All entries to be brought to the Sports Club Pavilion on Sunday 4th September between 8:00 and 9:45am

See the Schedule or online <https://www.elsworthshow.org/> for more information about all the classes.

We are very much in need of helpers over the weekend. If you can spare even the odd hour it would really make a difference. Contact Sonia 267743 to sign up or if you would like to have a stall.

Get planting, making and creating!